

CONE-SHAPED CONCEALED HEAD SCREW

ORGANIC COLORED COATING

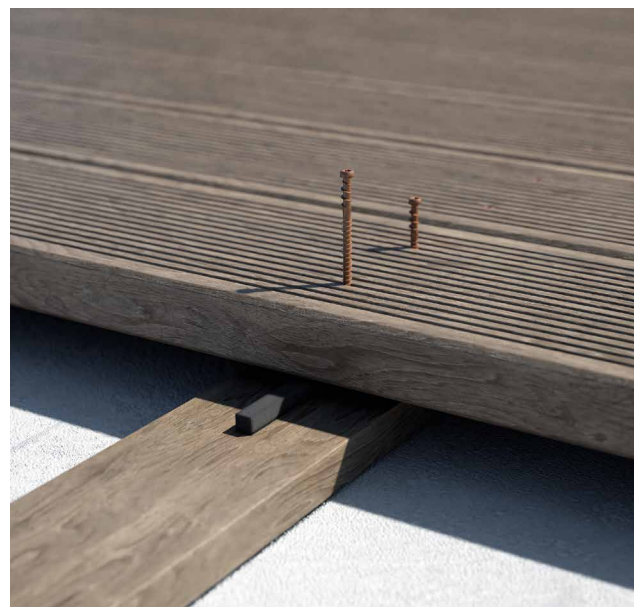
Carbon steel version with colored anti-rust coating (brown, grey, green, sand and black) for outdoor use in non acid timbers (T3).

COUNTER THREAD

The inverse (left-hand) under-head thread guarantees excellent grip. Small conical head to ensure it is hidden in the timber.

TRIANGULAR BODY

The three-lobed thread makes it possible to cut the wood grain during screwing. Exceptional timber pull-through.



DIAMETER [in]

0.14 **0.21 0.24** 0.32

LENGTH [in]

13/16 **1 11/16 4 3/4** 12 5/8

EXPOSURE CONDITION

EC1

ATMOSPHERIC CORROSIVITY

C1 C2 C3

WOOD CORROSIVITY

T1 T2 T3 T4

MATERIAL

ORGANIC COATING carbon steel with colored organic anti-rust coating



FIELDS OF USE

Outdoor use.
Wooden boards with density of < 780 kg/m³ [G = 0.92] (without pre-drill) and < 880 kg/m³ [G = 1.05] (with pre-drill).
WPC boards (with pre-drill).

CODES AND DIMENSIONS

KKT BROWN



d ₁	CODE	L		b		A	pcs
[mm] [in]		[mm]	[in]	[mm]	[in]	[in]	
5,1 0.21 #11 TX 20	KKTM540	43	1 11/16	25	1	3/4	200
	KKTM550	53	2 1/16	35	1 3/8	3/4	200
	KKTM560	60	2 3/8	40	1 9/16	1	200
	KKTM570	70	2 3/4	50	1 15/16	1	100
	KKTM580	80	3 1/8	53	2 1/16	1 1/4	100
6 0.24 #14 TX 30	KKTM660	60	2 3/8	40	1 9/16	1	100
	KKTM680	80	3 1/8	50	1 15/16	1 1/4	100
	KKTM6100	100	4	50	1 15/16	2	100
	KKTM6120	120	4 3/4	60	2 3/8	2 1/2	100

KKT GREY



d ₁	CODE	L		b		A	pcs
[mm] [in]		[mm]	[in]	[mm]	[in]	[in]	
5,1 0.21 #11 TX 20	KKTG540	43	1 11/16	25	1	3/4	200
	KKTG550	53	2 1/16	35	1 3/8	3/4	200
	KKTG560	60	2 3/8	40	1 9/16	1	200
	KKTG570	70	2 3/4	50	1 15/16	1	100
	KKTG580	80	3 1/8	53	2 1/16	1 1/4	100

KKT GREEN



d ₁	CODE	L		b		A	pcs
[mm] [in]		[mm]	[in]	[mm]	[in]	[in]	
5,1	KKTV550	53	1 15/16	35	1 3/8	3/4	200
0.21 #11	KKTV560	60	2 3/8	40	1 9/16	1	200
TX 20	KKTV570	70	2 3/4	50	1 15/16	1	200

KKT SAND



d ₁	CODE	L		b		A	pcs
[mm] [in]		[mm]	[in]	[mm]	[in]	[in]	
5,1	KKTS550	53	1 15/16	35	1 3/8	3/4	200
0.21 #11	KKTS560	60	2 3/8	40	1 9/16	1	200
TX 20	KKTS570	70	2 3/4	50	1 15/16	1	200

KKT BLACK



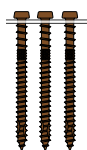
d ₁	CODE	L		b		A	pcs
[mm] [in]		[mm]	[in]	[mm]	[in]	[in]	
5,1	KKTN540(*)	43	1 11/16	36	1 7/16	3/4	200
0.21 #11	KKTN550	53	2 1/16	35	1 3/8	3/4	200
TX 20	KKTN560	60	2 3/8	40	1 9/16	1	200

(*)Not holding CE marking.

KKT COLOR STRIP

Bound version available for fast and accurate installation.
Ideal for large projects.

For information on screwdriver and additional products see page 431.

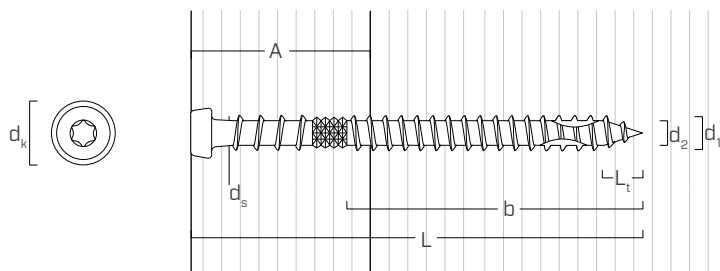


KKT BROWN

d ₁	CODE	L		b		A	pcs
[mm] [in]		[mm]	[in]	[mm]	[in]	[in]	
5,1 0.21 #11 TX 20	KKTMSTRIP540	43	1 11/16	25	1	3/4	800
	KKTMSTRIP550	53	2 1/16	35	1 3/8	3/4	800

Compatible with KMR 3371 loaders, code HH3371 with appropriate TX20 bit (code TX2075).

GEOMETRY



Nominal diameter	d ₁	[in] ⁽¹⁾	0.21	0.24
Outer thread diameter	d ₁	[mm]	5,1	6
		[in]	0.201	0.236
Head diameter	d _k	[in]	0.266	0.305
Root diameter	d ₂	[in]	0.118	0.154
Shank diameter	d _s	[in]	0.159	0.173
Tip length	L _t	[in]	0.201	0.236
Pre-drilling hole diameter ⁽²⁾	d _v	[in]	1/8 - 9/64	9/64 - 5/32

⁽¹⁾The nominal diameter of the screw is converted into imperial units and rounded up to the nearest decimal point.

⁽²⁾For high density materials, pre-drilled holes are recommended based on the wood species.